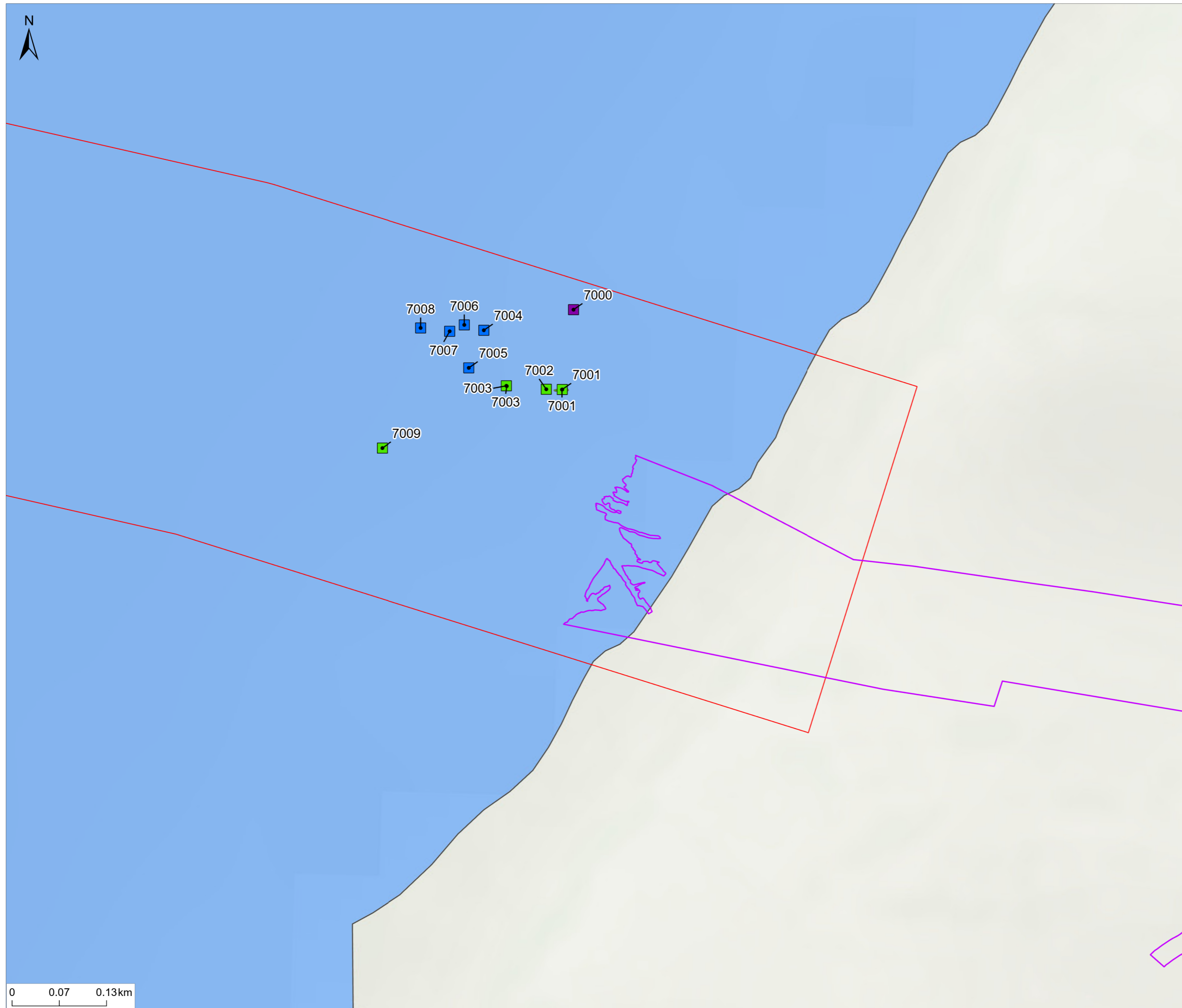


\\Corp\UKCloud\UK-GIS\01\data\70107275 - Xlinks13 - Xlinks132_GIS\ArcGIS\Pro\Projects\Xlinks UKIES Projects\Cultural Heritage and Marine Archaeology\794-PLN-ESH-00119 - CHMA - 7 - Seabed Features.aprx



Notes
 1. This plan is scaled at paper size A3. If received electronically it is the recipient's responsibility to print to the correct scale. Only written dimensions should be used.

- Legend**
- UK Offshore Cable Corridor
 - Indicative Cable Centreline
 - UK Exclusive Economic Zone (EEZ)
 - Onshore Infrastructure Area
 - Marine Archaeology and Cultural Heritage Study Area (5 km)
- Seabed Features - Classification**
- Dark reflector
 - Debris
 - Linear debris
 - Magnetic
 - Magnetic trend
 - Mound
 - Recorded Wreck
 - Recorded obstruction
 - Seabed disturbance
 - Wreck
- Seabed Boundaries Classification (UTM 30N)**
- Dark reflector
 - Seabed disturbance
 - Wreck
- Seabed Boundaries Classification (UTM 29N)**
- Debris field
 - Seabed disturbance



Rev	Description	By	CB	Date
P01	FINAL	CE	TM	Nov 2024

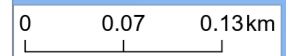


Client Xlinks 1 Limited
 Project Xlinks' Morocco-UK Power Project
 Title Seabed Features Sheet 1 of 12

APFP Reg: 5(2)(a)

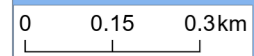
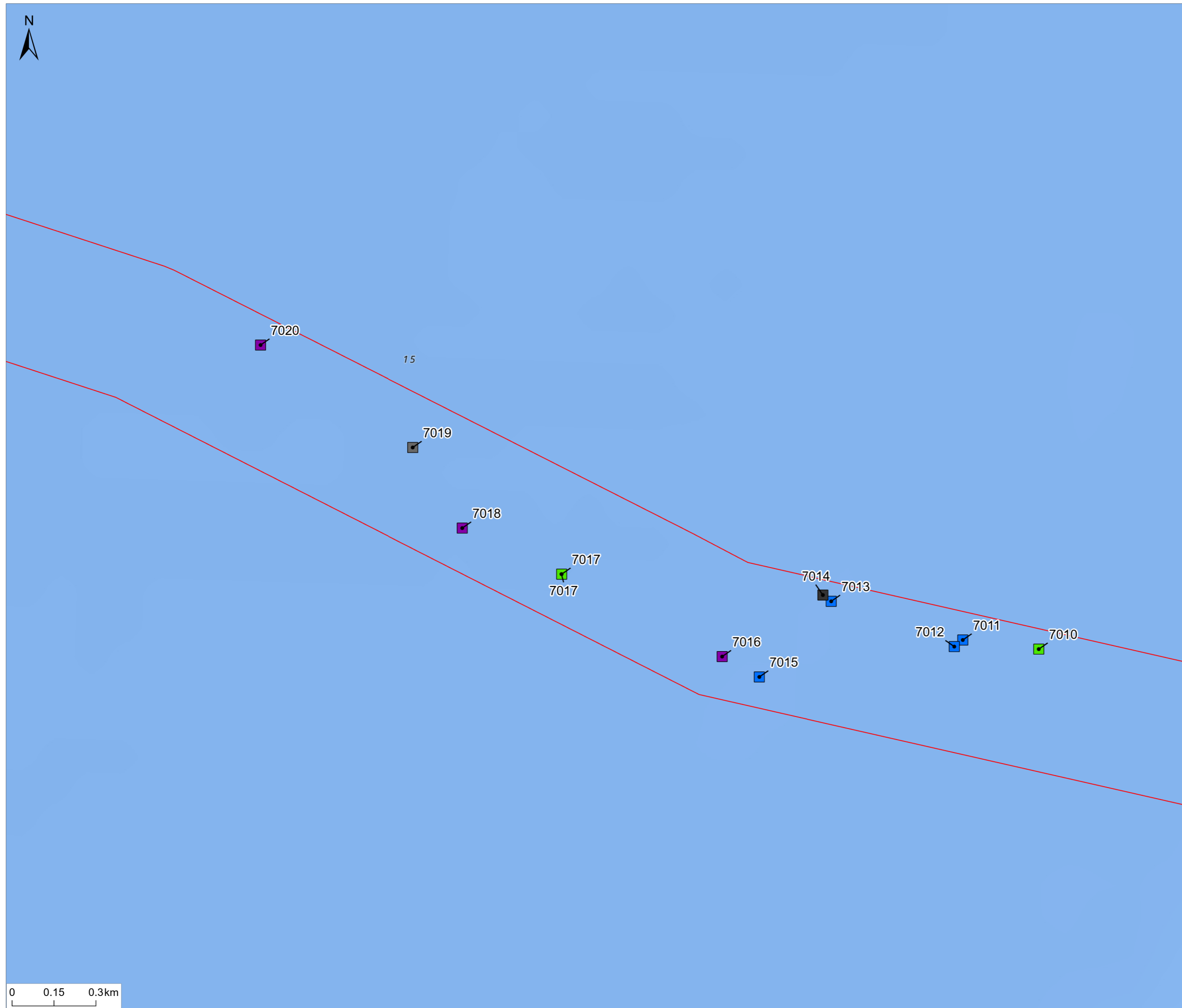
Status	Scale @ A3	Date Created
FINAL	1:5,000	Nov 2024
Figure Number		Rev
7.4		P01

www.xlinks.co





\\CorpUK\Cloud\UK-GIS\01\data\70107275 - Xlinks13 - Xlinks132_GIS\ArcGIS\Pro\Projects\Xlinks UK\ES Projects\Cultural Heritage and Marine Archaeology\794-PLN-ESH-00119 - CHMA - 7 - Seabed Features.aprx



Notes
1. This plan is scaled at paper size A3. If received electronically it is the recipient's responsibility to print to the correct scale. Only written dimensions should be used.

- Legend**
- UK Offshore Cable Corridor
 - Indicative Cable Centreline
 - UK Exclusive Economic Zone (EEZ)
 - Onshore Infrastructure Area
 - Marine Archaeology and Cultural Heritage Study Area (5 km)
- Seabed Features - Classification**
- Dark reflector
 - Debris
 - Linear debris
 - Magnetic
 - Magnetic trend
 - Mound
 - Recorded Wreck
 - Recorded obstruction
 - Seabed disturbance
 - Wreck
- Seabed Boundaries Classification (UTM 30N)**
- Dark reflector
 - Seabed disturbance
 - Wreck
- Seabed Boundaries Classification (UTM 29N)**
- Debris field
 - Seabed disturbance



Rev	Description	By	CB	Date
P01	FINAL	CE	TM	Nov 2024



Client Xlinks 1 Limited

Project Xlinks' Morocco-UK Power Project

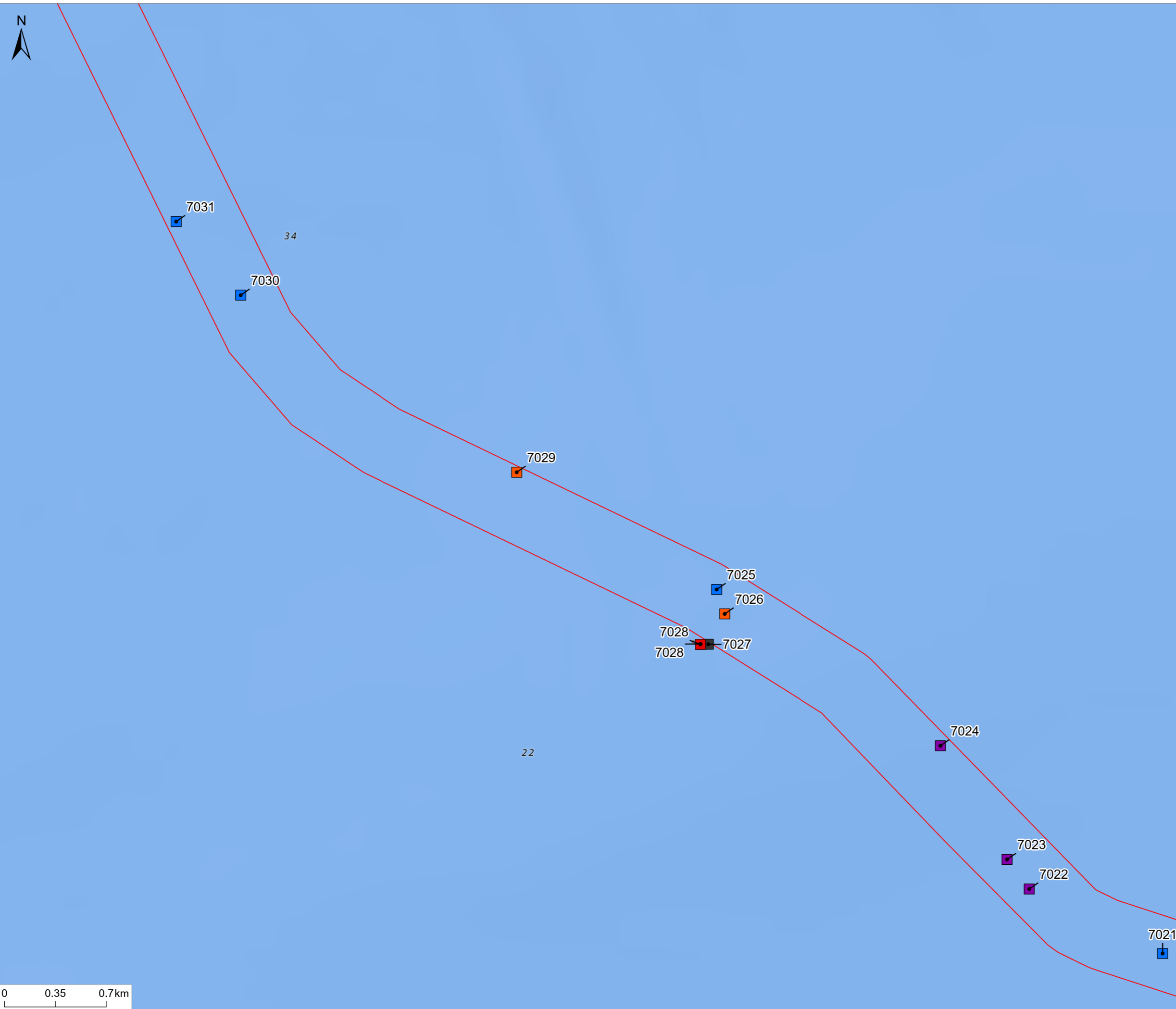
Title Seabed Features Sheet 2 of 12

Status FINAL Scale @ A3 1:13,000 Date Created Nov 2024

Figure Number 7.4 Rev P01

www.xlinks.co

\\Corp\UK\Cloud\UK-GIS\01\data\70107275 - Xlinks13 - Xlinks132_GIS\ArcGIS\Pro\Projects\UKIES Projects\Cultural Heritage and Marine Archaeology\794-PLN-ESH-00119 - CHMA - 7 - Seabed Features.aprx



Notes
 1. This plan is scaled at paper size A3. If received electronically it is the recipient's responsibility to print to the correct scale. Only written dimensions should be used.

- Legend**
- UK Offshore Cable Corridor
 - Indicative Cable Centreline
 - UK Exclusive Economic Zone (EEZ)
 - Onshore Infrastructure Area
 - Marine Archaeology and Cultural Heritage Study Area (5 km)
- Seabed Features - Classification**
- Dark reflector
 - Debris
 - Linear debris
 - Magnetic
 - Magnetic trend
 - Mound
 - Recorded Wreck
 - Recorded obstruction
 - Seabed disturbance
 - Wreck
- Seabed Boundaries Classification (UTM 30N)**
- Dark reflector
 - Seabed disturbance
 - Wreck
- Seabed Boundaries Classification (UTM 29N)**
- Debris field
 - Seabed disturbance



P01	FINAL	CE	TM	Nov 2024
Rev	Description	By	CB	Date



Client Xlinks 1 Limited
 Project Xlinks' Morocco-UK Power Project
 Title Seabed Features Sheet 3 of 12

Status FINAL Scale @ A3 1:25,000 Date Created Nov 2024
 Figure Number 7.4 Rev P01

www.xlinks.co



Notes
 1. This plan is scaled at paper size A3. If received electronically it is the recipient's responsibility to print to the correct scale. Only written dimensions should be used.

- Legend**
- UK Offshore Cable Corridor
 - Indicative Cable Centreline
 - UK Exclusive Economic Zone (EEZ)
 - Onshore Infrastructure Area
 - Marine Archaeology and Cultural Heritage Study Area (5 km)
- Seabed Features - Classification**
- Dark reflector
 - Debris
 - Linear debris
 - Magnetic
 - Magnetic trend
 - Mound
 - Recorded Wreck
 - Recorded obstruction
 - Seabed disturbance
 - Wreck
- Seabed Boundaries Classification (UTM 30N)**
- Dark reflector
 - Seabed disturbance
 - Wreck
- Seabed Boundaries Classification (UTM 29N)**
- Debris field
 - Seabed disturbance



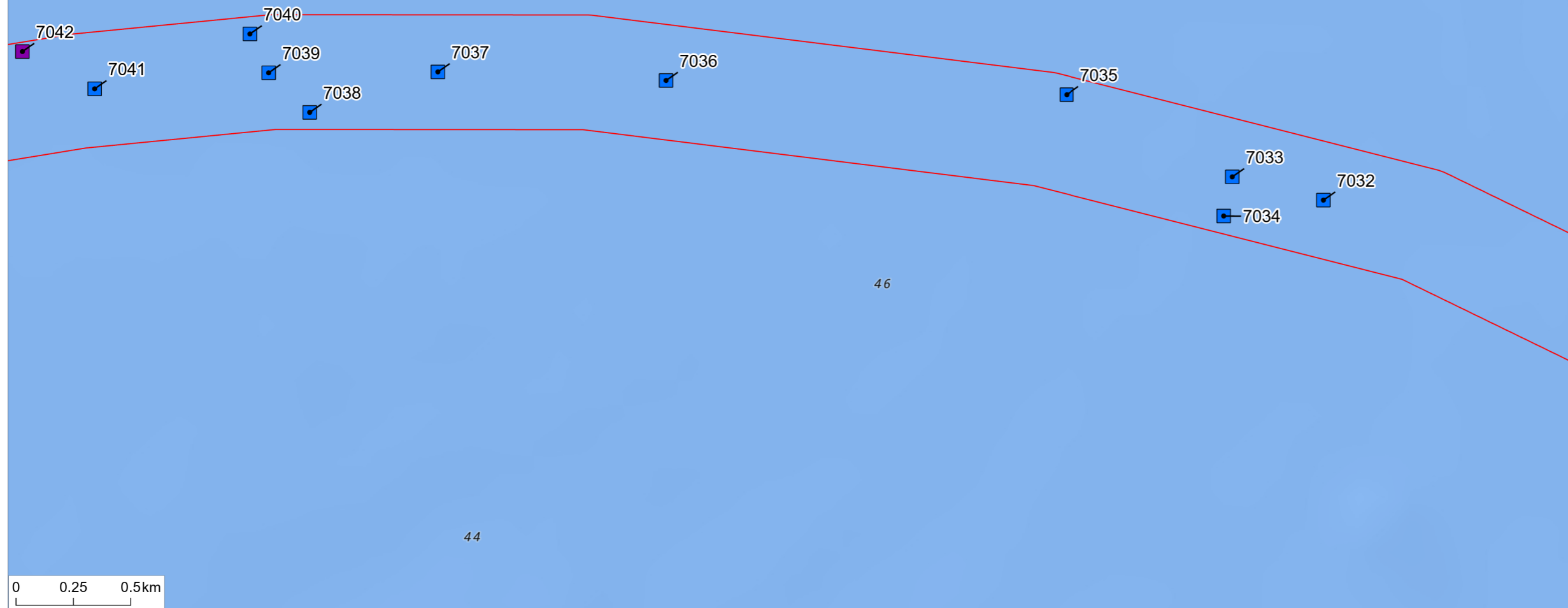
P01	FINAL	CE	TM	Nov 2024
Rev	Description	By	CB	Date



Client Xlinks 1 Limited
 Project Xlinks' Morocco-UK Power Project
 Title Seabed Features Sheet 4 of 12

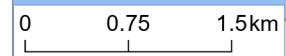
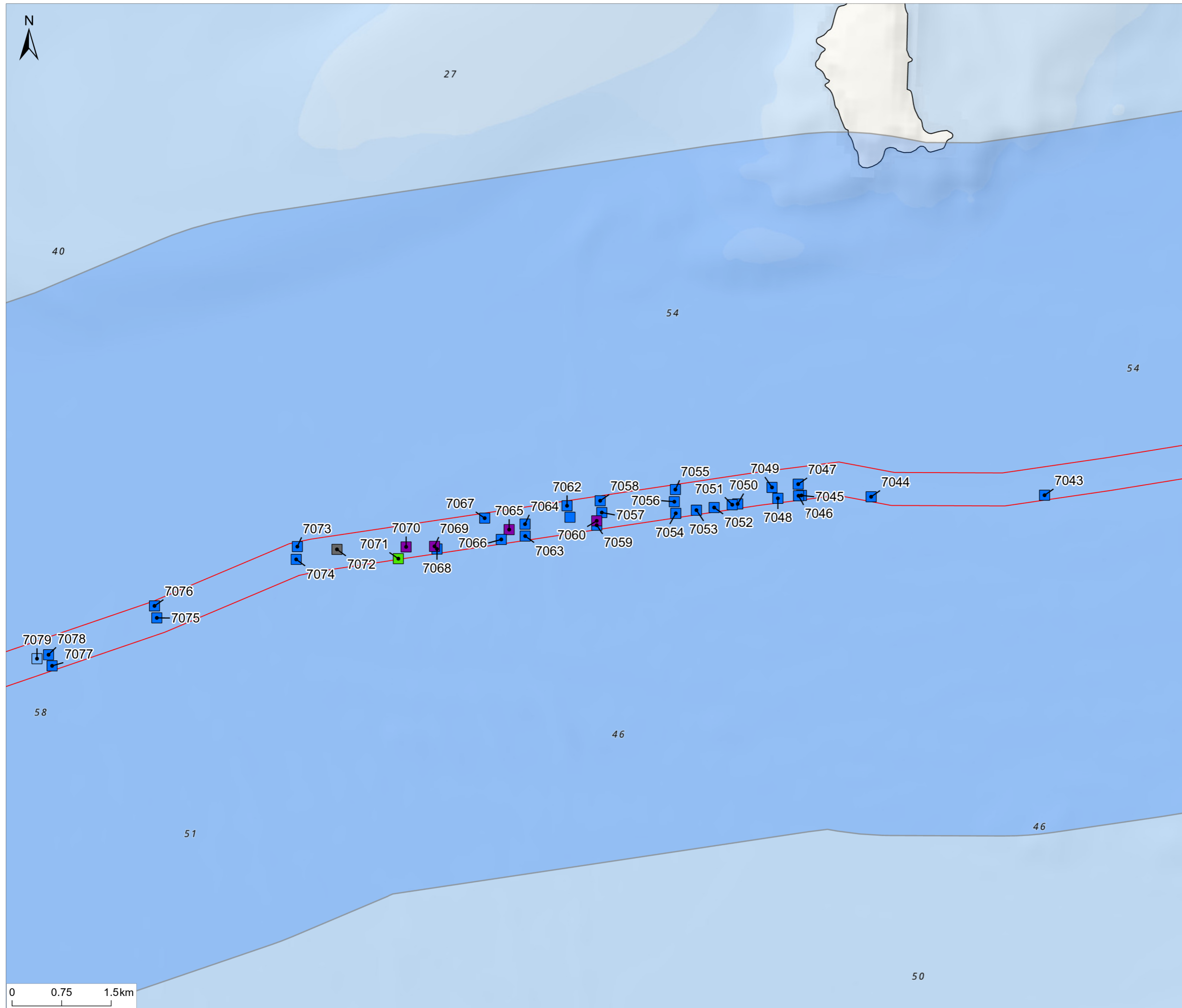
Status	Scale @ A3	Date Created
FINAL	1:21,000	Nov 2024
Figure Number	Rev	
7.4	P01	

www.xlinks.co



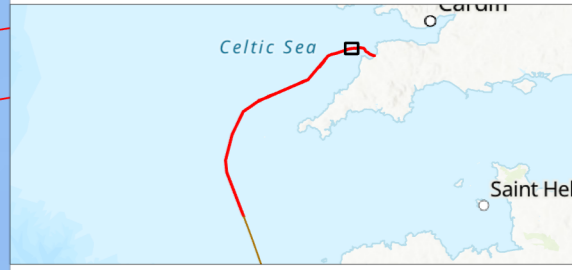
\\Corp\UKCloud\UK-GIS\01\data\70107275 - Xlinks13 - Xlinks13_GSS132_GIS\ArcGIS\Pro\Projects\UKIES Projects\Cultural Heritage and Marine Archaeology\794-PLN-ESH-00119 - CHMA - 7 - Seabed Features.aprx

\\Corp\UKCloud\UK-GIS\01\data\70107275 - Xlinks13 - GSS132_GIS\ArcGIS\Pro\Projects\Xlinks UK\ES Projects\Cultural Heritage and Marine Archaeology\794-PLN-ESH-00119 - CHMA - 7 - Seabed Features.aprx



Notes
 1. This plan is scaled at paper size A3. If received electronically it is the recipient's responsibility to print to the correct scale. Only written dimensions should be used.

- Legend**
- UK Offshore Cable Corridor
 - Indicative Cable Centreline
 - UK Exclusive Economic Zone (EEZ)
 - Onshore Infrastructure Area
 - Marine Archaeology and Cultural Heritage Study Area (5 km)
- Seabed Features - Classification**
- Dark reflector
 - Debris
 - Linear debris
 - Magnetic
 - Magnetic trend
 - Mound
 - Recorded Wreck
 - Recorded obstruction
 - Seabed disturbance
 - Wreck
- Seabed Boundaries Classification (UTM 30N)**
- Dark reflector
 - Seabed disturbance
 - Wreck
- Seabed Boundaries Classification (UTM 29N)**
- Debris field
 - Seabed disturbance



P01	FINAL	CE	TM	Nov 2024
Rev	Description	By	CB	Date

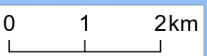
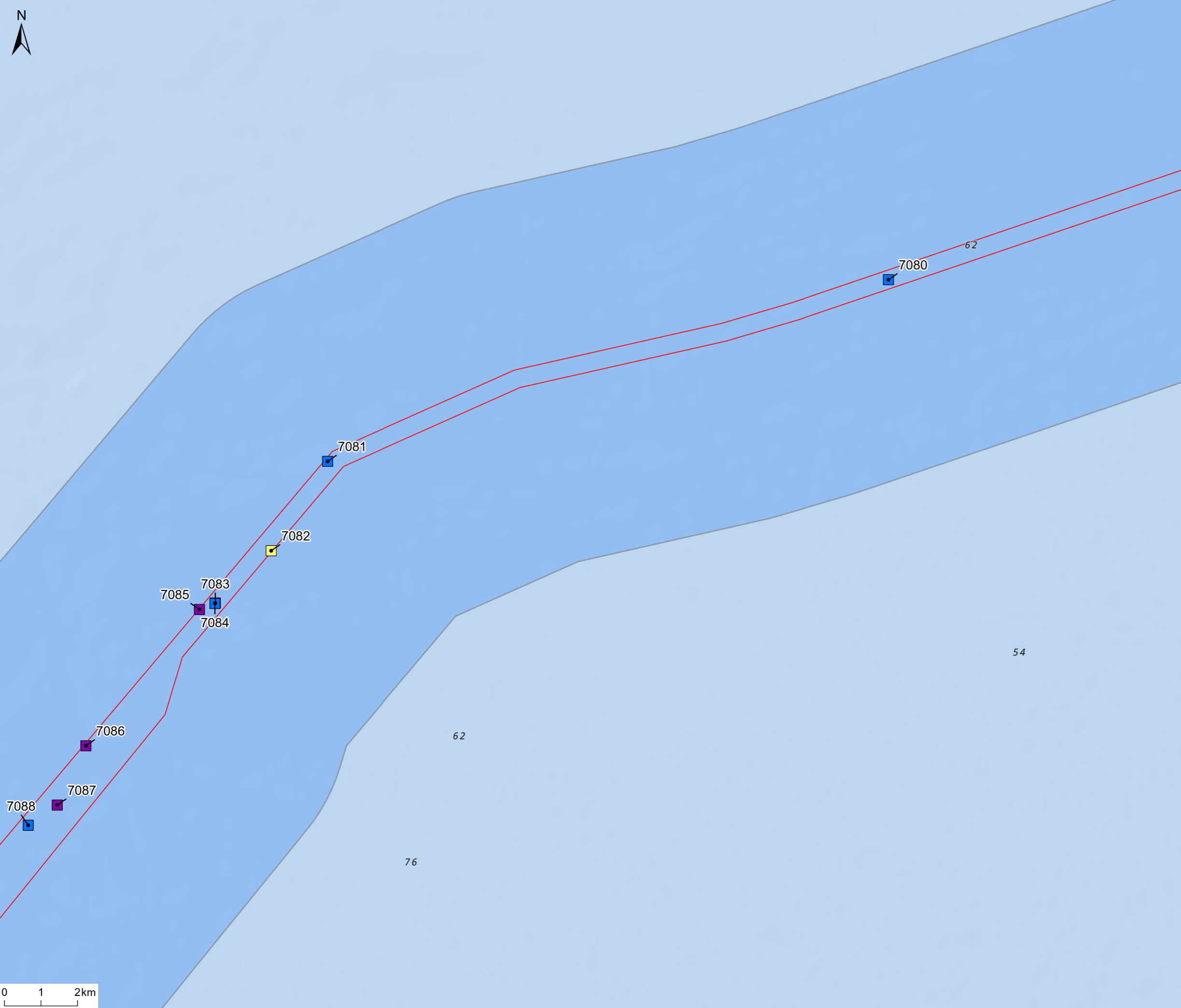


Client Xlinks 1 Limited
 Project Xlinks' Morocco-UK Power Project
 Title Seabed Features Sheet 5 of 12

Status FINAL Scale @ A3 1:55,000 Date Created Nov 2024
 Figure Number 7.4 Rev P01

www.xlinks.co

\\Corp\UKCloud\UK-GIS\01\data\70107275 - Xlinks13 - GSS132_GIS\ArcGIS\Pro\Projects\UKIES Projects\Cultural Heritage and Marine Archaeology\794-PLN-ESH-00119 - CHMA - 7 - Seabed Features.aprx



Notes
 1. This plan is scaled at paper size A3. If received electronically it is the recipient's responsibility to print to the correct scale. Only written dimensions should be used.

- Legend**
- UK Offshore Cable Corridor
 - Indicative Cable Centreline
 - UK Exclusive Economic Zone (EEZ)
 - Onshore Infrastructure Area
 - Marine Archaeology and Cultural Heritage Study Area (5 km)
- Seabed Features - Classification**
- Dark reflector
 - Debris
 - Linear debris
 - Magnetic
 - Magnetic trend
 - Mound
 - Recorded Wreck
 - Recorded obstruction
 - Seabed disturbance
 - Wreck
- Seabed Boundaries Classification (UTM 30N)**
- Dark reflector
 - Seabed disturbance
 - Wreck
- Seabed Boundaries Classification (UTM 29N)**
- Debris field
 - Seabed disturbance



P01	FINAL	CE	TM	Nov 2024
Rev	Description	By	CB	Date

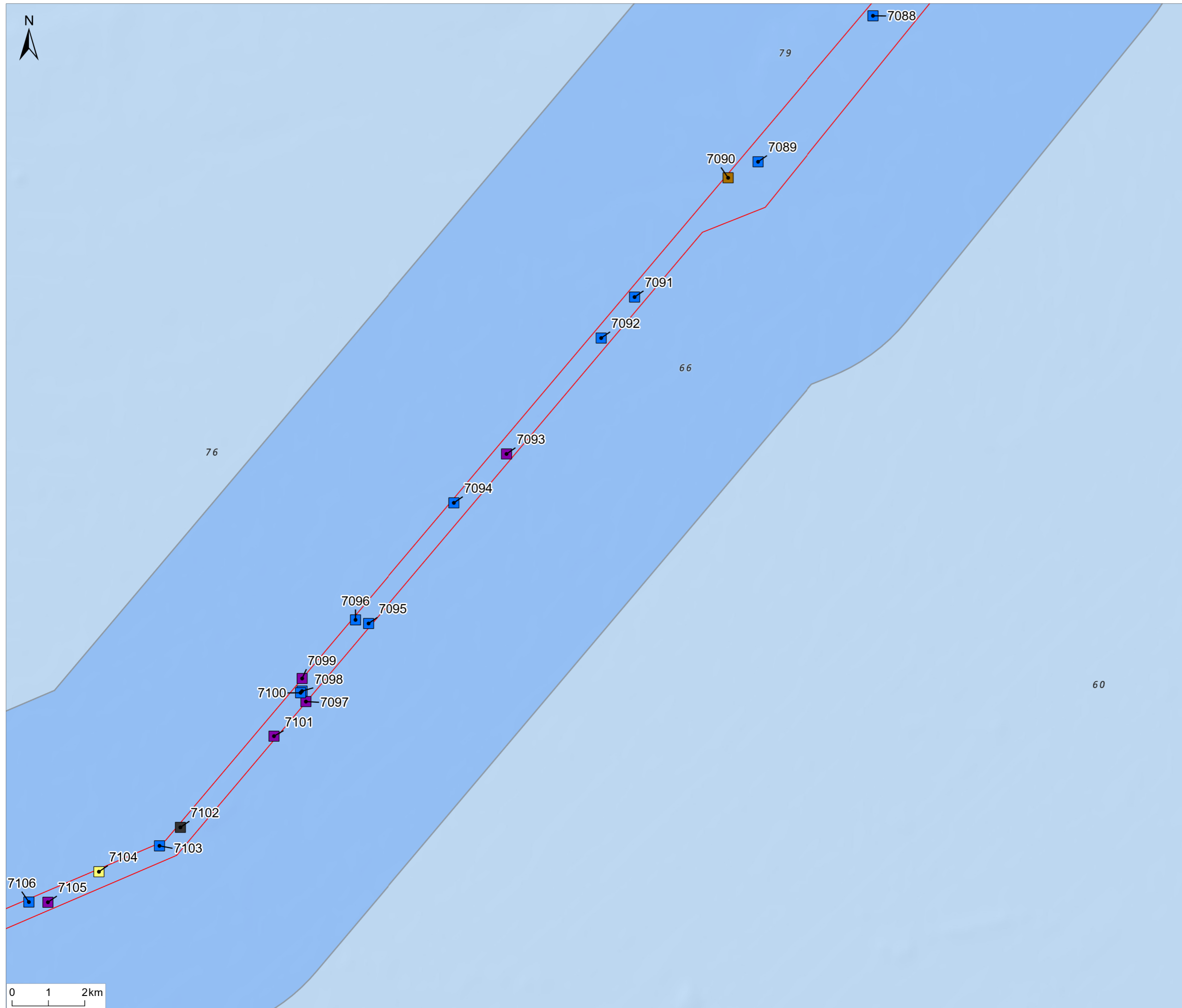


Client Xlinks 1 Limited
 Project Xlinks' Morocco-UK Power Project
 Title Seabed Features Sheet 6 of 12

Status **FINAL** Scale @ A3 1:100,000 Date Created Nov 2024
 Figure Number **7.4** Rev **P01**

www.xlinks.co

\\Corp\UKCloud\UK-GIS\01\data\70107275 - Xlinks13 - GSS132_GIS\ArcGIS\Pro\Projects\Xlinks UK\ES Projects\Cultural Heritage and Marine Archaeology\794-PLN-ESH-00119 - CHMA - 7 - Seabed Features.aprx



Notes
 1. This plan is scaled at paper size A3. If received electronically it is the recipient's responsibility to print to the correct scale. Only written dimensions should be used.

- Legend**
- UK Offshore Cable Corridor
 - Indicative Cable Centreline
 - UK Exclusive Economic Zone (EEZ)
 - Onshore Infrastructure Area
 - Marine Archaeology and Cultural Heritage Study Area (5 km)
- Seabed Features - Classification**
- Dark reflector
 - Debris
 - Linear debris
 - Magnetic
 - Magnetic trend
 - Mound
 - Recorded Wreck
 - Recorded obstruction
 - Seabed disturbance
 - Wreck
- Seabed Boundaries Classification (UTM 30N)**
- Dark reflector
 - Seabed disturbance
 - Wreck
- Seabed Boundaries Classification (UTM 29N)**
- Debris field
 - Seabed disturbance



P01	FINAL	CE	TM	Nov 2024
Rev	Description	By	CB	Date

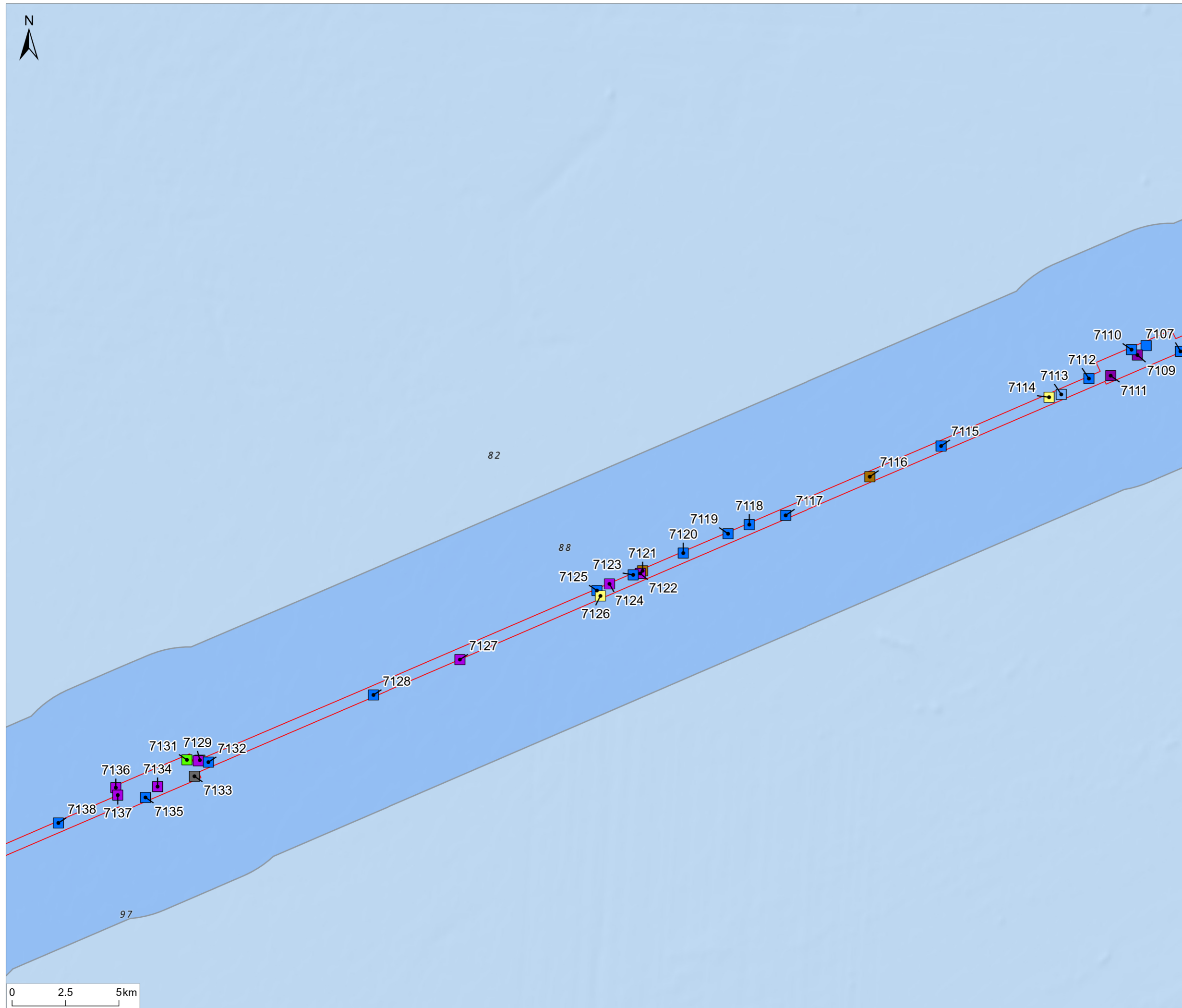


Client Xlinks 1 Limited
 Project Xlinks' Morocco-UK Power Project
 Title Seabed Features Sheet 7 of 12

Status **FINAL** Scale @ A3 1:100,000 Date Created Nov 2024
 Figure Number **7.4** Rev **P01**

www.xlinks.co

\\Corp\UKCloud\UK-GIS\01\data\70107275 - Xlinks13 - GIS\ArcGIS\Pro\Projects\Xlinks UK\ES Projects\Cultural Heritage and Marine Archaeology\794-PLN-ESH-00119 - CHMA - 7 - Seabed Features.aprx



Notes
 1. This plan is scaled at paper size A3. If received electronically it is the recipient's responsibility to print to the correct scale. Only written dimensions should be used.

- Legend**
- UK Offshore Cable Corridor
 - Indicative Cable Centreline
 - UK Exclusive Economic Zone (EEZ)
 - Onshore Infrastructure Area
 - Marine Archaeology and Cultural Heritage Study Area (5 km)

- Seabed Features - Classification**
- Dark reflector
 - Debris
 - Linear debris
 - Magnetic
 - Magnetic trend
 - Mound
 - Recorded Wreck
 - Recorded obstruction
 - Seabed disturbance
 - Wreck

Seabed Boundaries Classification (UTM 30N)

- Dark reflector
- Seabed disturbance
- Wreck

Seabed Boundaries Classification (UTM 29N)

- Debris field
- Seabed disturbance



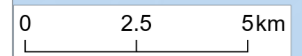
P01	FINAL	CE	TM	Nov 2024
Rev	Description	By	CB	Date



Client Xlinks 1 Limited
 Project Xlinks' Morocco-UK Power Project
 Title Seabed Features Sheet 8 of 12

Status FINAL Scale @ A3 1:170,000 Date Created Nov 2024
 Figure Number 7.4 Rev P01

www.xlinks.co



\\Corp\UKCloud\UK-GIS\01\data\70107275 - Xlinks13 - GIS\ArcGIS\Pro\Projects\UKIES Projects\Cultural Heritage and Marine Archaeology\794-PLN-ESH-00119 - CHMA - 7 - Seabed Features.aprx

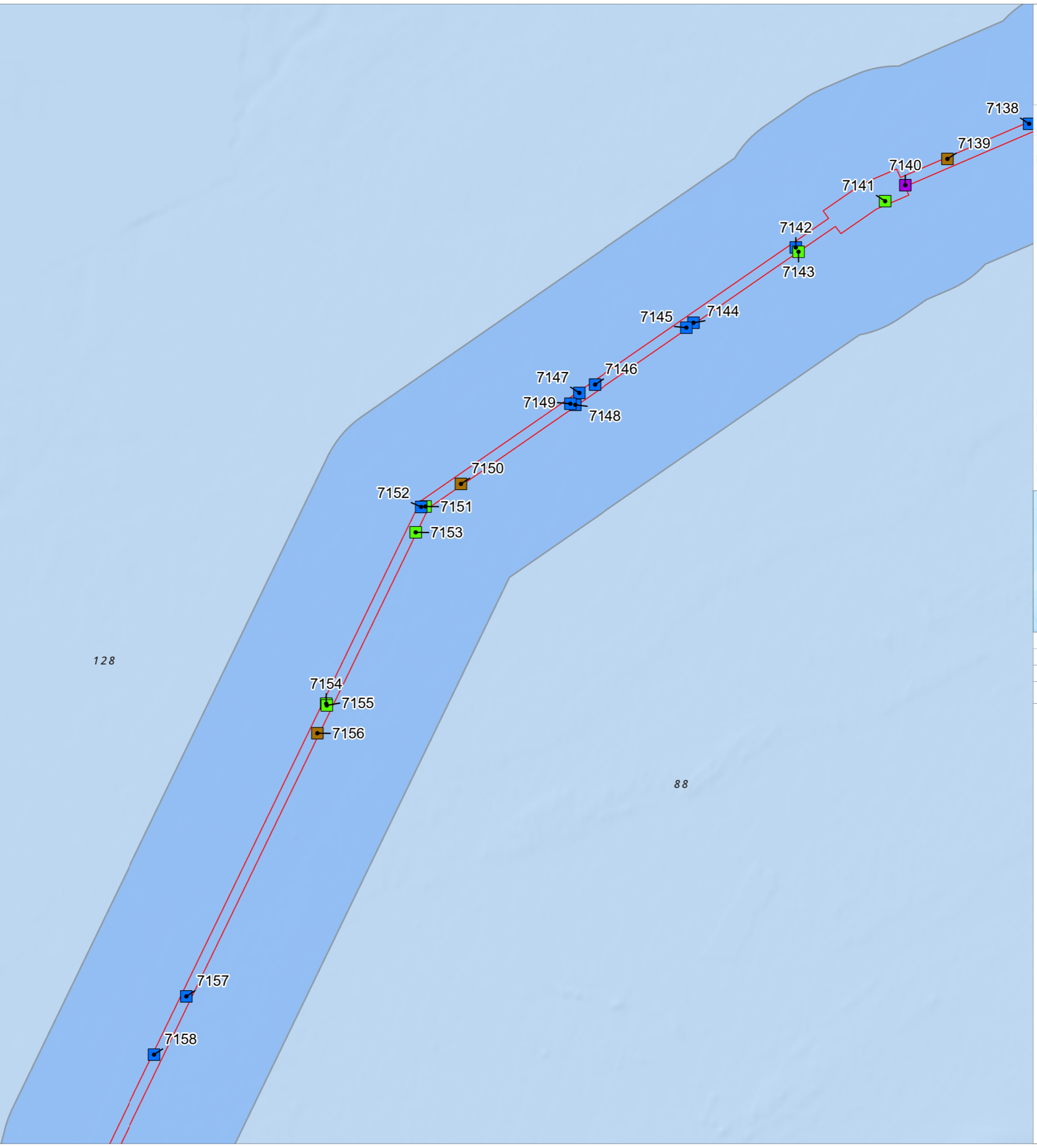
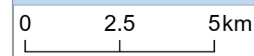


127

98

128

88



Notes
 1. This plan is scaled at paper size A3. If received electronically it is the recipient's responsibility to print to the correct scale. Only written dimensions should be used.

- Legend**
- UK Offshore Cable Corridor
 - Indicative Cable Centreline
 - UK Exclusive Economic Zone (EEZ)
 - Onshore Infrastructure Area
 - Marine Archaeology and Cultural Heritage Study Area (5 km)
- Seabed Features - Classification**
- Dark reflector
 - Debris
 - Linear debris
 - Magnetic
 - Magnetic trend
 - Mound
 - Recorded Wreck
 - Recorded obstruction
 - Seabed disturbance
 - Wreck
- Seabed Boundaries Classification (UTM 30N)**
- Dark reflector
 - Seabed disturbance
 - Wreck
- Seabed Boundaries Classification (UTM 29N)**
- Debris field
 - Seabed disturbance



P01	FINAL	CE	TM	Nov 2024
Rev	Description	By	CB	Date



Client Xlinks 1 Limited

Project Xlinks' Morocco-UK Power Project

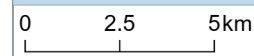
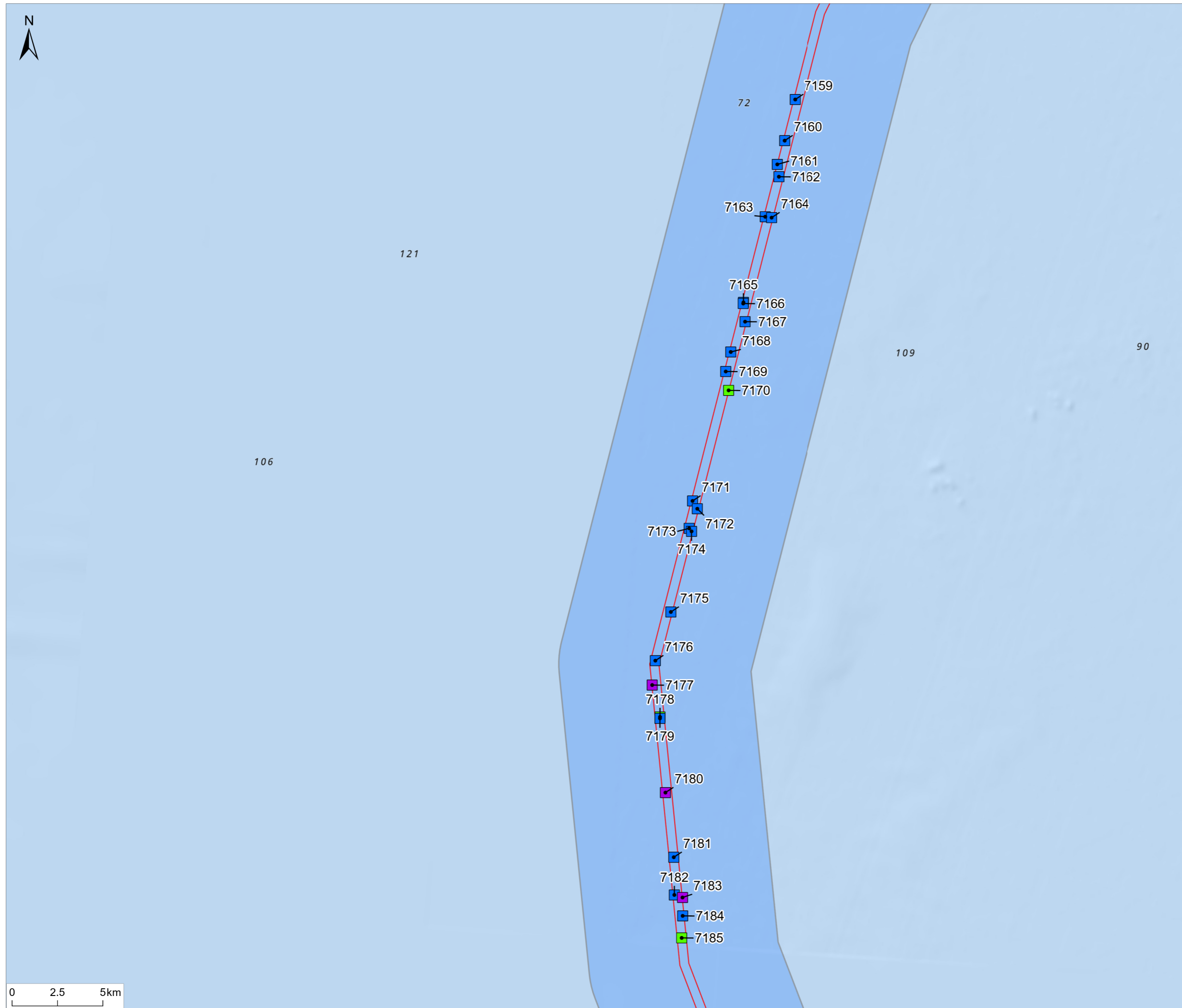
Title Seabed Features Sheet 9 of 12

Status FINAL Scale @ A3 1:200,000 Date Created Nov 2024

Figure Number 7.4 Rev P01

www.xlinks.co

\\Corp\UKCloud\UK-GIS\01\data\70107275 - Xlinks13 - GSS132_GIS\ArcGIS\Pro\Projects\Xlinks UKIES Projects\Cultural Heritage and Marine Archaeology\794-PLN-ESH-00119 - CHMA - 7 - Seabed Features.aprx



Notes
 1. This plan is scaled at paper size A3. If received electronically it is the recipient's responsibility to print to the correct scale. Only written dimensions should be used.

- Legend**
- UK Offshore Cable Corridor
 - Indicative Cable Centreline
 - UK Exclusive Economic Zone (EEZ)
 - Onshore Infrastructure Area
 - Marine Archaeology and Cultural Heritage Study Area (5 km)
- Seabed Features - Classification**
- Dark reflector
 - Debris
 - Linear debris
 - Magnetic
 - Magnetic trend
 - Mound
 - Recorded Wreck
 - Recorded obstruction
 - Seabed disturbance
 - Wreck
- Seabed Boundaries Classification (UTM 30N)**
- Dark reflector
 - Seabed disturbance
 - Wreck
- Seabed Boundaries Classification (UTM 29N)**
- Debris field
 - Seabed disturbance



P01	FINAL	CE	TM	Nov 2024
Rev	Description	By	CB	Date

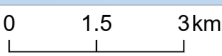
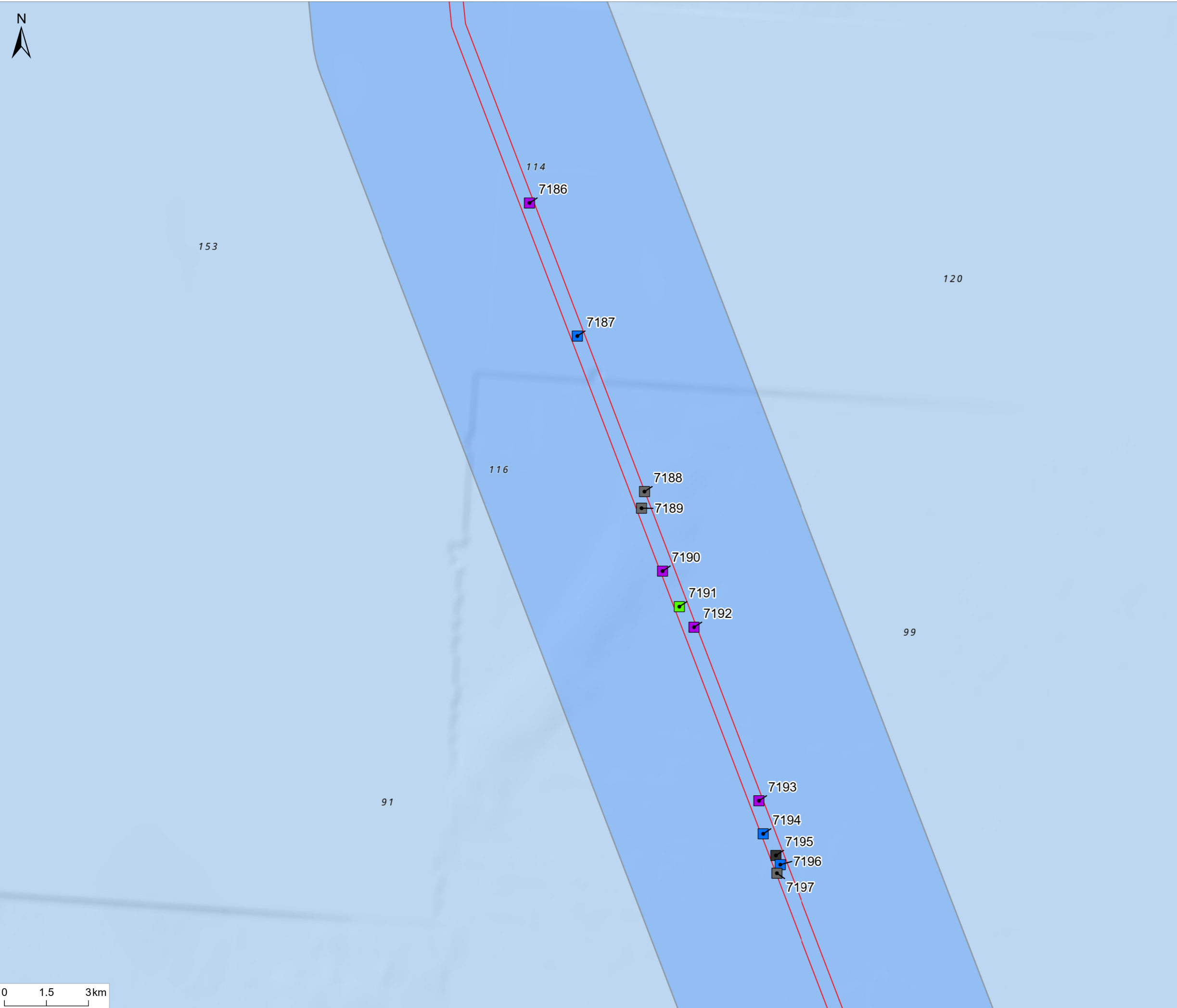


Client Xlinks 1 Limited
 Project Xlinks' Morocco-UK Power Project
 Title Seabed Features Sheet 10 of 12

Status **FINAL** Scale @ A3 1:200,000 Date Created Nov 2024
 Figure Number **7.4** Rev **P01**

www.xlinks.co

\\CorpUKCloud\UK-GIS\01\data\70107275 - Xlinks13 - Xlinks132_GIS\ArcGIS\Pro\Projects\UKIES Projects\Cultural Heritage and Marine Archaeology\794-PLN-ESH-00119 - CHMA - 7 - Seabed Features.aprx



Notes
 1. This plan is scaled at paper size A3. If received electronically it is the recipient's responsibility to print to the correct scale. Only written dimensions should be used.

- Legend**
- UK Offshore Cable Corridor
 - Indicative Cable Centreline
 - UK Exclusive Economic Zone (EEZ)
 - Onshore Infrastructure Area
 - Marine Archaeology and Cultural Heritage Study Area (5 km)
- Seabed Features - Classification**
- Dark reflector
 - Debris
 - Linear debris
 - Magnetic
 - Magnetic trend
 - Mound
 - Recorded Wreck
 - Recorded obstruction
 - Seabed disturbance
 - Wreck
- Seabed Boundaries Classification (UTM 30N)**
- Dark reflector
 - Seabed disturbance
 - Wreck
- Seabed Boundaries Classification (UTM 29N)**
- Debris field
 - Seabed disturbance



P01	FINAL	CE	TM	Nov 2024
Rev	Description	By	CB	Date

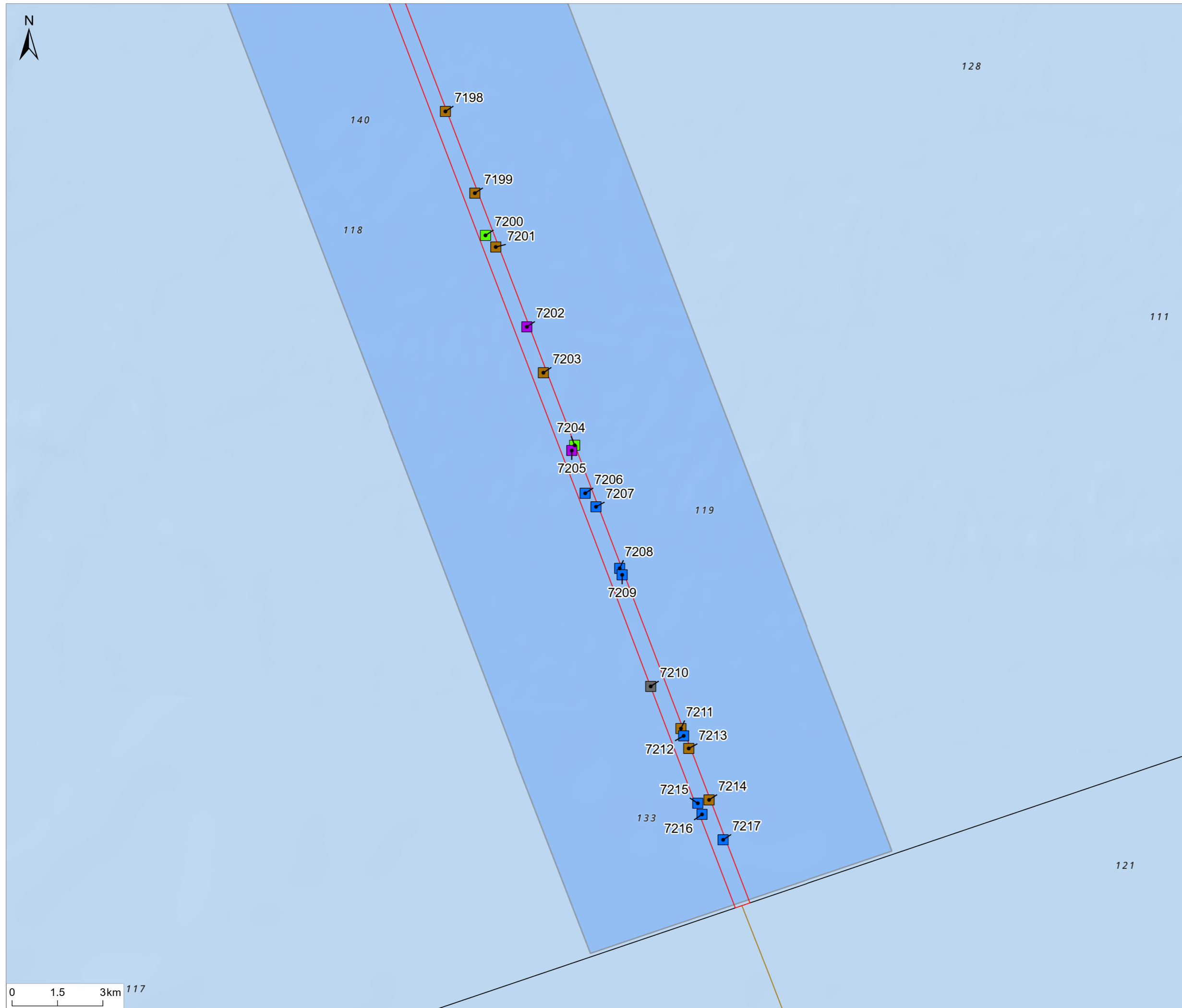


Client Xlinks 1 Limited
 Project Xlinks' Morocco-UK Power Project
 Title Seabed Features Sheet 11 of 12

Status FINAL Scale @ A3 1:130,000 Date Created Nov 2024
 Figure Number 7.4 Rev P01

www.xlinks.co

\\CorpUKCloud\UK-GIS\01\data\70107275 - Xlinks13 - GIS\ArcGIS\Pro\Projects\Xlinks UKIES Projects\Cultural Heritage and Marine Archaeology\794-PLN-ESH-00119 - CHMA - 7 - Seabed Features.aprx



Notes
 1. This plan is scaled at paper size A3. If received electronically it is the recipient's responsibility to print to the correct scale. Only written dimensions should be used.

- Legend**
- UK Offshore Cable Corridor
 - Indicative Cable Centreline
 - UK Exclusive Economic Zone (EEZ)
 - Onshore Infrastructure Area
 - Marine Archaeology and Cultural Heritage Study Area (5 km)
- Seabed Features - Classification**
- Dark reflector
 - Debris
 - Linear debris
 - Magnetic
 - Magnetic trend
 - Mound
 - Recorded Wreck
 - Recorded obstruction
 - Seabed disturbance
 - Wreck
- Seabed Boundaries Classification (UTM 30N)**
- Dark reflector
 - Seabed disturbance
 - Wreck
- Seabed Boundaries Classification (UTM 29N)**
- Debris field
 - Seabed disturbance



P01	FINAL	CE	TM	Nov 2024
Rev	Description	By	CB	Date



Client Xlinks 1 Limited
 Project Xlinks' Morocco-UK Power Project
 Title Seabed Features Sheet 12 of 12

Status FINAL Scale @ A3 1:120,000 Date Created Nov 2024
 Figure Number 7.4 Rev P01

www.xlinks.co